



Greetings from Tiger Town!

Groundhog Day came twice this year! You might have noticed that our January newsletter was sent out again this past weekend due to the launch of our new database system, CADENCE. The nostalgia of Groundhog Day continued when South Carolina resident and actor Bill Murray – best known for his leading role in Groundhog Day – made an auspicious appearance at the Clemson men’s basketball game versus Louisville on Saturday, February 15!

The groundhog did not see his shadow this year, so we are hopeful that spring is on its way! The first blooms of the season are popping up on our beautiful campus, and I think many of us are looking forward to the spring weather that brings warmer temperatures, vibrant hues of flowers, and the smell of fresh, green grass. With the abnormal amount of rain we’ve experienced, we will be celebrating the clear blue skies to come this spring.

We are a few weeks away the midpoint of the spring semester, and there are several occasions for celebration! From the official opening of the Clemson Softball Stadium to various gift announcements, we’ve had numerous opportunities to honor donors who are making a significant impact on Clemson today, tomorrow and forever.

Growing up in the small town of Cowpens, South Carolina, Gwen Shoneke always cherished her grandfather’s Clemson beanie cap and his colorful stories about his time as a student at the University. Gwen’s grandfather, Dr. George Dean Martin, graduated in 1915 from Clemson Agricultural College and became a pharmacist and owner of Cowpens Drug Store. Gwen says her connection with Clemson has been forged over a lifetime, and she wanted to give back and offer students from Cowpens the same opportunity she had to become a part of the Clemson Family. She established the Honer M. Shoneke Scholarship Endowment for Graphic Communications in honor of her mother, Maudine Martin Shoneke, and her brother, Austin Dean "Skipper" Shoneke, who both taught at Cowpens High School and Broome High School. Ensuring that a Cowpens graduate has the opportunity for an excellent education is a way for Gwen to "pay it forward." Gwen’s affinity and affection for the University is strong. She is a proud member of the Clemson Legacy Society and is honored to be able to help support a University that is "forward thinking and innovative."

Aside from her generosity and commitment to Clemson, Gwen is the proud owner and operator of Cowpens Gallery, a fair trade and antiques booth in downtown Cowpens. We are eternally grateful for Gwen’s generosity and lifelong commitment to our University. Gwen’s creative spirit will leave a lasting legacy on generations of Cowpens’ students and their great endeavors. You can read more about Gwen’s scholarship endowment [here](#).



We recently honored a very special couple, Don and Hayden Quattlebaum, who are supporting their vision for Clemson University and honoring the memory of their son Andy with an Academic Cornerstone gift of \$2.7 million. The majority of the funds will support the Outdoor Education Center at the Snow Family Outdoor Fitness and Wellness complex, which has been named the Andy Quattlebaum Outdoor Education Center. The remainder of their gift will be used to support the Baruch Institute of Coastal Ecology and Forest Science in Georgetown.

Andy was a student in the Bridge to Clemson program, and he enjoyed spending time at "Y" beach where the facility that bears his name now stands. Andy had a passionate interest in wildlife conservation, and he also enjoyed camping, rock climbing and boating. The Andy Quattlebaum Outdoor Education Center was created to be a destination that brings students together and connects them with outdoor recreation. The center and its activities place emphasis on wellness, relaxation and experiences that promote physical, mental and emotional health. This holistic space will enrich the lives of students, creating experiences that will shape their future. This is truly a special place that will memorialize and celebrate the life of Andy. You can view photos from the dedication [here](#), watch a video of the event [here](#), and read more about Don and Hayden’s commitment to Clemson and future generations [here](#).



The Quattlebaums and Gwen Shoneke serve as an inspiration to all of us. Their philanthropic spirits are what drive this University forward, though the change they created likely started with small thoughts of, "What can I do?"

Celebrating the generosity and commitment of our thoughtful donors gives us an opportunity to reflect on the legacy we each can leave at Clemson. We are here to help you through that process. You may link to our [website](#), call us at 864-656-0663 or write to us at [giving@clemson.edu](mailto:giving@clemson.edu). We also invite you to learn more about charitable IRA distribution benefits [here](#). If the new SECURE law has you scratching your head, please let us know how we can help you navigate the maze of your financial goals and philanthropic objectives. You can download our free [Wills Guide](#), which was designed to assist you throughout the estate planning process.

I hope you and your family are planning a visit to our campus soon. As the temperatures rise and the flowers continue to bloom, it will be a wonderful time to walk the paths that lead us "home."

Go Tigers!

Gratefully yours,

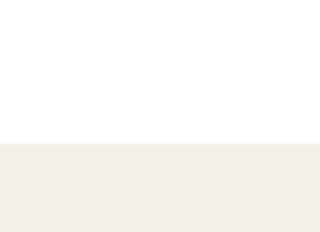


**JoVanna J. King**  
Senior Associate Vice President for Development

## Personal Planner

### Gifts of Stock

What will the market do this year? Perhaps the best answer is, "It will go up and down." Stock returns vary to a significant degree each year. However, long-term stock returns have been reasonably substantial.



[Read More »](#)

## Savvy Living

### When Should Memory Care Patients Stop Driving?

Is there a good rule of thumb on when memory care patients should stop driving? My 82-year-old mom has early stage Alzheimer’s disease but still drives herself around town just fine.

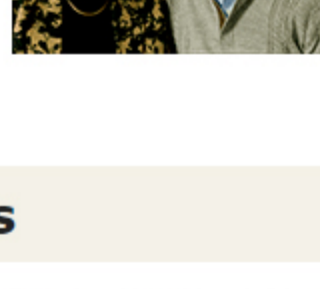


[Read More »](#)

## Donor Story

### Part Gift and Part Sale

Susan and Kevin bought their first home many years ago. They had planned to build a second home so that their children could spend their summers along the lake.

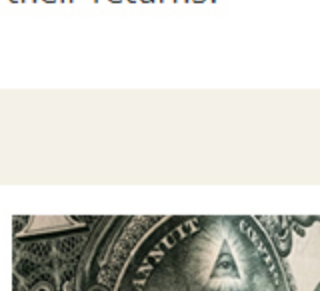


[Read More »](#)

## Washington News

### Virtual Tax Service Safety

Millions of taxpayers are gathering data and preparing to do their returns. Many are using smartphones, laptops, tablets and other devices to file. A growing number of taxpayers this year will use virtual tax services to complete their returns.



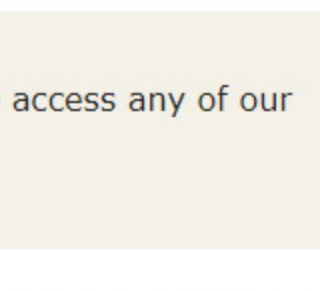
[Read More »](#)

## Finances

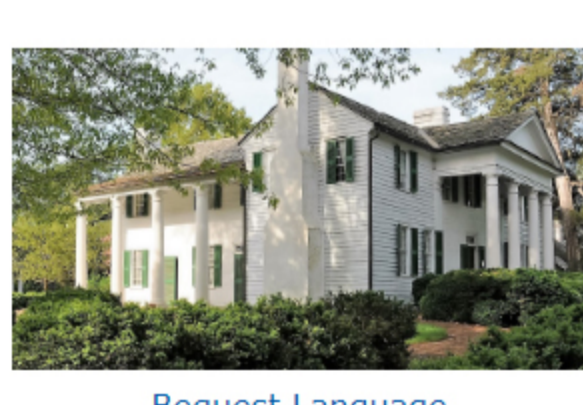
### Walmart’s Online Sales Soar

### Treasury Yields Hit Record Lows

### Mortgage Rates Rise



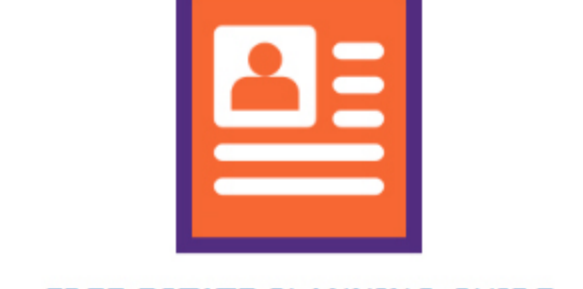
Thank you for your interest in planned giving. To access any of our resources, please go to our website.



[Learn about Wills](#)



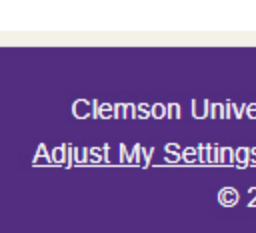
[IRA Charitable Rollover](#)



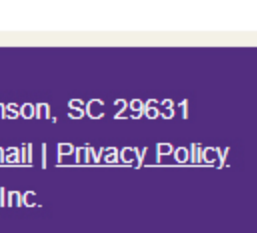
[Bequest Language](#)



[Charitable Gift Annuity](#)



[FREE ESTATE PLANNING GUIDE](#)



[PLANNED GIVING CALCULATORS](#)